



**ZULIANI Elvio srl - Building Equipments**

Via Zorutti, 80 - 33030 Campoformido (UD) Italia

**ph.** +39 0432-662448 - **fax.** +39 0432-662449

info@ez-group.it

[www.ez-group.it](http://www.ez-group.it)

# PREFAB HOUSES

## EZ-GROUP



# **BEDROOM**





**ZULIANI Elvio srl - Building Equipments**

Via Zorutti, 80 - 33030 Campoformido (UD) Italia

**ph.** +39 0432-662448 - **fax.** +39 0432-662449

info@ez-group.it

**www.ez-group.it**





**ZULIANI Elvio srl - Building Equipments**

Via Zorutti, 80 - 33030 Campoformido (UD) Italia

**ph.** +39 0432-662448 - **fax.** +39 0432-662449

info@ez-group.it

[www.ez-group.it](http://www.ez-group.it)

# KITCHEN ROOM





**ZULIANI Elvio srl - Building Equipments**

Via Zorutti, 80 - 33030 Campoformido (UD) Italia

**ph.** +39 0432-662448 - **fax.** +39 0432-662449

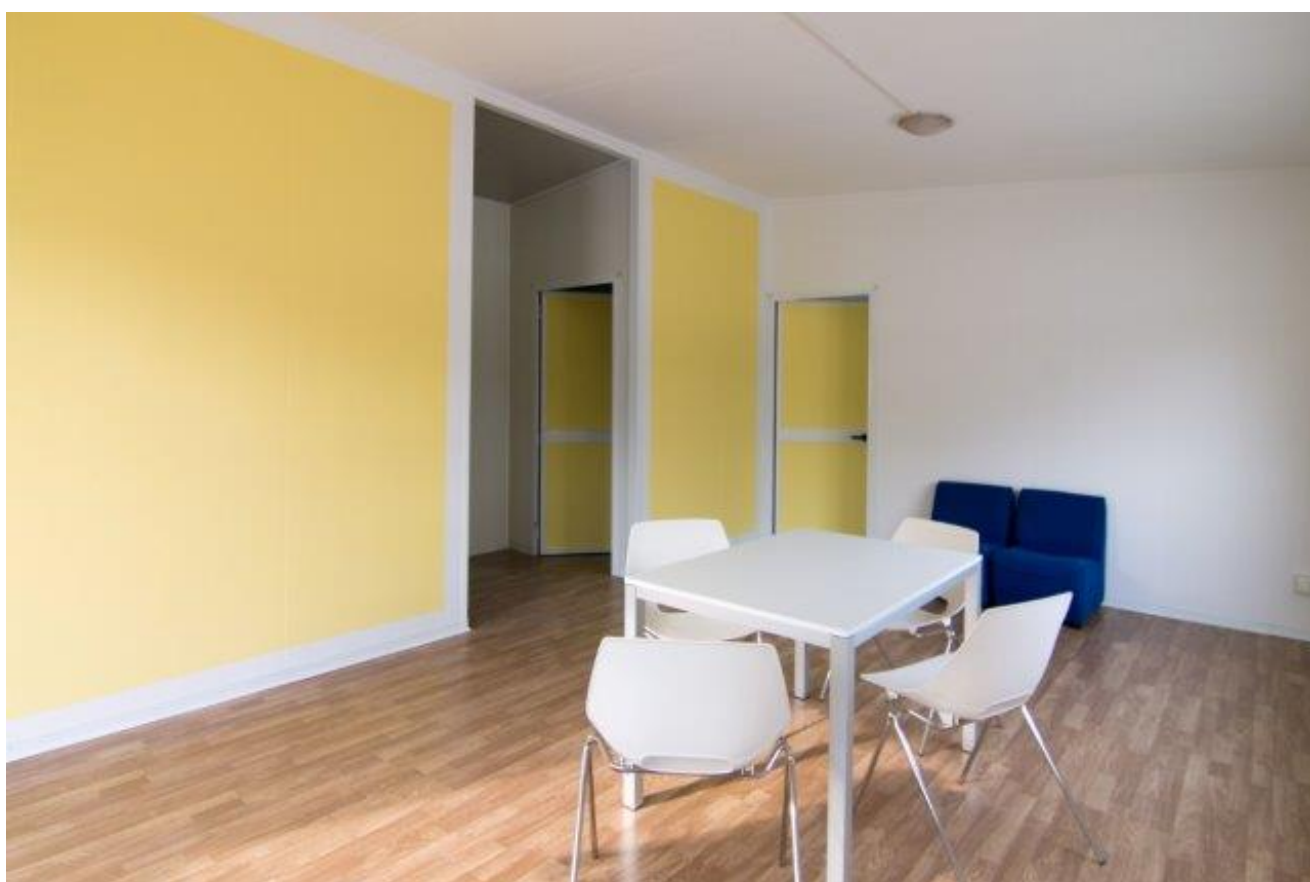
info@ez-group.it

[www.ez-group.it](http://www.ez-group.it)

# HALLWAY



# LIVING ROOM



# TOILETTE





ZULIANI Elvio srl - Building Equipments

Via Zorutti, 80 - 33030 Campoformido (UD) Italia

ph. +39 0432-662448 - fax. +39 0432-662449

info@ez-group.it

www.ez-group.it

## STEEL HOUSE MODEL WITH TWO ROOF SLOPES

### STEEL PREFAB HOUSE 54 SQM

DIMENSIONS cm 900 x 600  
HEIGHT cm 280 INNER H. UNTIL WALL PANEL HEIGHT  
LIVING AREA **SQM 54,00**

### STEEL PREFAB HOUSE 68 SQM

DIMENSIONS cm 1045 x 412 + 602 x 407  
HEIGHT cm 280 A L'INTERIEUR HAUTEUR DE PANNEAU  
LIVING AREA **MC 62.30+VERRANDE 5.70 TOTALE MC 68.00**

### STEEL PREFAB HOUSE 80 SMQ

DIMENSIONS cm 1045 X 412 + 902 X 407  
HEIGHT cm 280 INNER H. UNTIL PANEL HEIGHT  
LIVING AREA **MC 74.20 + VERRANDE 5.80 TOTALE MC 80.00**

### STEEL PREFAB HOUSE 121 SMQ

DIMENSIONS cm 1245 X 412 + 1102 X 407 + 602 X 407  
HEIGHT cm 280 INNER H. UNTIL WALL PANEL HEIGHT  
LIVING AREA **MC 115.50 +VERRANDE MC 5.50 TOTALE MC 121.00**

### STEEL PREFAB HOUSE 141 SMQ

DIMENSIONS cm 1245 X 412 + 1102 X 814  
HAUTEUR cm 280 INNER H. UNTIL WALL PANEL HEIGHT  
LIVING AREA **MC 135.50 + VERRANDE MC 5.50 TOTALE MC 141.00**



### SHELL:

**It is fully provided by galvanized and pre-painted steel profiles.**

*The wall panels are fitted inside steel profiles "U SHAPE" which are fixed to a concrete platform; the edges are linked by proper profiles.*

### WALL PANELS:

- **EXTERNAL WALLS** are made by sandwich panels with outer/inner metal sheets, thickness mm0,5, which are pre-painted following Coil Coating procedure, the insulation is ensured by polyurethane foams (PUR), total density 40kg/m<sup>3</sup>; Fire proof according to EN 13501 -2 EN 13501-1 regulations.
- **mm 50 thickness with thermal coefficients according to** EN 14509 A10 regulation, i.e.,:

**W/m<sup>2</sup> K 0,40**

**kcal/m<sup>2</sup> h °C 0,35**

*INNER WALLS(PARTITIONS)* are realised with sandwich panels having an external/internal metal sheet with Coil Coating procedure, insulated by polyurethane(PUR), Total density **40/kg/m<sup>3</sup>**.

**FIRE PROOF**, comply with regulations in force.

- **Mm 40 thickness with thermal coefficient** according to EN 14509 A10 regulation, i.e.,:

**W/m<sup>2</sup> K 0,40**

**kcal/m<sup>2</sup> h °C 0,35**

### ROOF:

are made by sandwich panels with outer/inner metal sheets, thickness mm0,5, which are pre-painted, the insulation is ensured by polyurethane foams (PUR), total density 40kg/m<sup>3</sup>;

Self-carrying wall panels

**Mm 30 thickness in the FLAT section and mm 70 in the FRET section**



Finishing: SMOOTH surface available in different colours like " RED SIENA colourway", or white/grey or green Tuscany

**VERANDAH:** it is realized by an extension of main roof, the columns are realized using the same finishing/colours of those ones already used for the external walls of the home.

**GUTTERS AND DOWNSPOUTS :** they are realized by galvanized and painted steel sheets.

**FLOOR:** not provided.

**DOORS AND WINDOWS:** alluminium frames or PVC frames which are pre-painted into natural white colourway; doors and windows are equipped with mm4 single glass,locks,handles,rubber seals anti-dust

- External BLIND door or middle glass with safety bars (cm 90x200-net light )
- Internal blind doors (cm 80x200 )
- Windows with sliding opening system (cm 90 x 98 net light) and they are equipped with curtains and safety bars
- wasistas windows (cm 43x43 net light) with printed glass

**ELECTRICAL SYSTEM:** comply with the regulations in force and it is realized using parts and components of high quality brands and all of these ones are EU certificates;

The wiring is provided by PVC pipings , propers and suitables, to speed-up the installation steps.

It is provided by:

- Switchers
- Sockets into different types/models
- No. 01 Schuko socket for water bowl
- Different lights
- No. 01 electrical board
- No. 01 Plastic box to store pvc pipings from different places

**PLUMBING:** it is provided by:

- No 01 maschere tubi di raccordo acqua
- No 01 CERAMIC WC
- No 01 CERAMIC SHOWER TRAYS equipped with shower head, water mixer, bath accessories
- No 01 CERAMIC SINK installed into column
- No 01 Boiler 30 Liters capacity
- No 01 Pre-installation pipes for Kitchen

### **JOINING PARTS**

The supply includes all materials/parts/accessories like screws, other metal parts, silycon guns, gaskets, rivets which are needed for a proper installation at site.



**ZULIANI Elvio srl - Building Equipments**

Via Zorutti, 80 - 33030 Campofornido (UD) Italia

**ph.** +39 0432-662448 - **fax.** +39 0432-662449

info@ez-group.it

**www.ez-group.it**

### **EASIER KIT SYSTEM**

With the aim to speed-up all installation steps and to get a more practical way to assemble the house, all parts/elements are already suitable and proper for their installation; **the panels** are already cut to size, **doors and windows** are ready to be fitted, **all steel profiles** are cut to size, **electric and plumbing systems** are pre-installed.

We provide for detailed **assembling plans**, detailed technical instructions into English Language, in order to simplify all installations steps and sequences.

## **MAIN TECHNICAL TOPICS OF OUR PREFAB HOMES:**

**ANTI SEISMIC:** our prefab homes are fully guaranteed against earthquakes

**RESISTANCE AGAINST WIND PRESSURE:** our prefab homes are fully guaranteed against the different situations of wind pressure, like as per below examples:

**With Wall panels mm50 thickness, we achieve a resistance to a wind pressure until 145 Km/h**

**With Wall panels mm80 thickness, we achieve a resistance to a wind pressure until 175 Km/h**

**ROOF LOAD CAPACITY:** with a roof panel mm 40/80 thickness, the load capacity is about 100kg/sqm

**DURABILITY:** the average durability of our prefab homes is from 30 years to 50 years.



**ZULIANI Elvio srl - Building Equipments**

Via Zorutti, 80 - 33030 Campoformido (UD) Italia

**ph.** +39 0432-662448 - **fax.** +39 0432-662449

info@ez-group.it

**www.ez-group.it**

## **EXTRAS options solutions:**

**False ceiling** realised with sandwich panels **insulated by polyurethane foam** (density 40Kg/cubic meter); outer/inner finishing with pre-painted galvanized sheets, smooth surface, white colour RAL 9010.

**With mm 30 thickness**, the thermal coefficient is the following one:

**W/m<sup>2</sup> K 0,71**

**kcal/m<sup>2</sup> h °C 0,61**

False ceiling realised with panels with square design 60x60 into mineral fiber, mm18 thickness, having a reticular structure aluminium and steel wire rods.

**Inner walls** are treated using the same resin used for the external ones.

**The external walls** could be also realised with sandwich panels **mm80** or **mm100** thickness.

**Roof panels** are available into mm50/90 or mm80/120 thickness also.

**Interior finishes with plasterboard**

Upon request, we can provide with further extras, such as air conditioning, photovoltaic panels, heating, different finishes of roof panels, different design and solutions of wall panels, different solutions for electrical wiring, plumbing, etc.

## **ADVANTAGES AND KEY POINTS OF STEEL HOUSE MANUFACTURED USING THIS CONCEPT/ TECHNOLOGY BY EDIL EUGANEA BRAND:**

- A) A very SHORT production time** Monthly Production Capacity: **300 units** Everywhere: *Short Expected Delivery Time*
- B) LOWER transport costs**  
One container 40HC can be filled with 170 square meters of **"turn-key prefab house"**
- C) Easy and practical installation** because all parts of prefab house are packed and shipped into "different kits" .
- D) Manual installation**  
Crane is not needed at Site; all parts and elements have a low weight so they can be handled without any problem
- E) A very short installation period**  
A prefab house of 80SQM can be installed in 4 working days by 4 installers.
- F) Strength of the structure**  
Our Steel house is studied and manufactured considering the features of Wind pressure, loading charges, anti-seismic in the most areas of the globe.
- G) Living comfort**  
High performances about the thermal coefficient  
A prefab house manufactured by using a sandwich panels mm50 thickness has a thermal coefficient related a cement wall cm25 thickness, finishing included.
- H) Waterproof materials**
- I) High defense against insects and animals.**